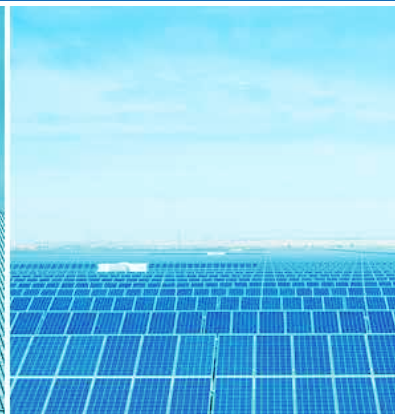


wrench



Project Management Information System

for Engineering and Construction Industry

9000+
Projects

100+
Customers

27
Countries

THE WRENCH CREDO

To continuously delight our customers with a frictionless and efficient support process

THE STORY BEHIND THE CREDO:

As an IT company catering to the engineering and construction sector for two decades, we've gained a lot of experience and knowledge over the years, and wanted a way to use this knowledge. So we made it the cornerstone of our Smart Support Network, building it into the network in such a way that it help customers access the organized and archived knowledge to solve their problems quickly and painlessly.

For the same reason we tirelessly track and experiment with modern technology, like cloud and mobile networks, Microsoft Chatbot and so on, to set up a continuously evolving 'smart hub' where customers and staff can talk freely to each other, drawing on past experience and even pooling their experiences when required.



ABOUT US

Wrench Solutions is driven by the larger purpose of digitally transforming the construction industry by providing solutions that improves the way work is done. By leveraging modern digital technology, we help Owners, PMCs, Contractors, and Engineering Consulting companies plan, execute, and monitor their projects efficiently.

SOLUTIONS

Our solutions are designed to make sure project stakeholders have on-demand realtime information to make decisions, and so keep their projects on time, on budget, and built to the highest quality. Guided by our core values of commitment to simplicity, customer success, ethical behavior, and mutual respect, we strive to meet this challenge every day.

“Thanks to Wrench SmartProject we managed 58 projects with just 13 people in project controls. The biggest benefit is: we were able to reduce delays to such an extent that our projects are now ahead of schedule, which is amazing”

Ayman El Tannir,
Head of Project control,
China Petroleum Engineering

“A really robust and user-friendly system developed from actual client requirements. I have evaluated and worked with many systems over the last 25 years and I think this one is remarkably well suited for an engineering company”

Stephen Petch,
Project Controls Manager, Tetrattech.

We aim to be always on the cutting edge of technology, with our product development driven by customer needs, innovation, and new ways of doing things. We wrap our solutions around the client’s core business needs and try to provide consistently high levels of support.

We use best practices recommended by global project management bodies such as AACE and PMI to standardize processes across every department, and automate every process, task, and activity. As an advocate of global best practices, we help project professionals enhance their project controls knowledge and skills through our premier trainings, resources, and expert guidance in project management. Wrench Academy is our effort towards that.

An intelligent cloud based, mobile-friendly engineering and construction project management solutions and services is offered under the brand name Wrench SmartProject

STRATEGIC ALLIANCE PARTNERS

Our collaboration with Microsoft helps customers to quickly deploy our solutions along with Microsoft integrations that improve operational efficiencies. We also work with Autodesk to develop tighter integration between Autodesk’s leading design tools for BIM, including the Autodesk Revit and Autodesk Navisworks product families.



OUR CLIENTS

Our client list consists some of the world's largest enterprises from Infrastructure, Engineering, Construction and Manufacturing sectors, including oil and gas, water treatment, energy and power, building, aeronautics, automotive, and manufacturing. Some of our key projects include:



Installation of Flue-gas Desulfurization Systems at Coal-fired Power Plants Operated by State-owned Indian Power Utility with Total Output of 3,320MW.
Client: Mitsubishi Power Ltd. (earlier Mitsubishi Hitachi Power Systems)



Development of 23.3km metro rail corridor with 23 stations for Pune Metropolitan Region Development Authority, India, a project being executed in private public-partnership model.
Client: Tata Realty & Siemens Project Ventures



Provisioning injection water to the oil fields of southern Iraq, run by South Oil Company. The oil fields will use the seawater for enhanced oil recovery, where water is injected into the reservoir, allowing for increased oil production.
Client: Ch2m Hill

CONNECT WITH US



Houston
+1 281 667 6867



Ontario
+1 832 873 0614



London
+44 773 039 7850



Sydney
+61 8 6102 0261



Abu Dhabi
+971 50 466 8276



Singapore
+65 9026 5688



India
+91 484 407 8201

[REQUEST DEMO](#)

